



**SUPPLEMENT 2
TO
SECTIONS 14 & 15

DESIGN SERIES
ELEVATIONS**

SUPPLEMENT - 2

CABINET DESIGN SERIES - CDS

THE FOLLOWING CASEWORK ILLUSTRATIONS ARE ADOPTED AS DESIGN STANDARDS AND PROVIDED TO ASSIST ARCHITECT / DESIGN PROFESSIONALS AND CASEWORK USERS IN SELECTING TYPICAL DESIGNS. THESE ILLUSTRATIONS ARE NOT INTENDED TO LIMIT OR RESTRICT CREATIVITY, OR BE ALL INCLUSIVE.

In utilizing the **CDS** numbering system, it is not necessary to show casework elevations in your architectural drawings. However, it is necessary to show a plan view with each **CDS** number indicated along with the width, height, and depth in inches (Example: "102-36x30x18"). Cabinet dimensions indicate the nominal outside dimension (floor to top of countertop for height and face of finished wall to face of cabinet door for depth). Fabricators are permitted a tolerance of 1/2" plus/minus in width only.

If other designs are desired than those provided for in the **CDS** system, they may be indicated by selecting the **CDS** number most closely representing the desired design, followed by the letter "M" and a description or illustration of the design modification. (Example: "102M - 2 shelves - 36x30x18" or "102M - no shelves - 36x30x18"). If the **CDS** numbering system is used in conjunction with cabinet elevations on architectural drawings, the cabinet elevations shall govern on any conflict between the requirements of the elevation and/or the **CDS** number.

The following casework heights are recommended for various school grades, subject to ADA requirements:

Kindergarten - Grade 1	= 24"
Grades 2 - 3	= 27"
Grades 4 - 6	= 30"
Grades 7 - 9	= 33"
Grades 10 and above	= 36"

The **CABINET DESIGN SERIES** are subdivided as follows:

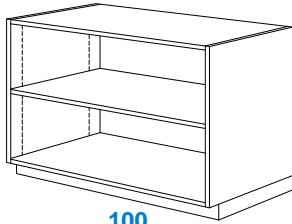
Base Cabinets w/o Drawers	= 100 Series
Base Cabinets w/ Drawers	= 200 Series
Wall Hung Cabinets	= 300 Series
Tall Storage Cabinets	= 400 Series
Tall Wardrobe Cabinets	= 500 Series
Library Cabinets	= 600 Series
Moveable Cabinets	= 700 Series

ALL HARDWARE AND ACCESSORIES SHALL BE AS APPROVED BY THESE STANDARDS AND LISTED IN THE INSTITUTE'S SEPARATELY PUBLISHED "APPROVED HARDWARE SUPPLEMENT" WHICH IS UPDATED ANNUALLY.

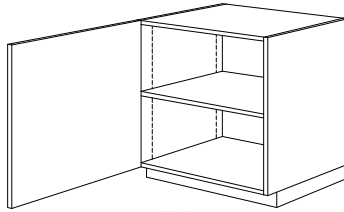
GENERAL NOTES:

- 100 or 200 Series cabinets may be converted into moveable cabinets by prefixing a "7" to the number.
- Moveable cabinets shall be equipped with adequate approved casters for the intended load capacity.
- Cabinet Design Series #'s 728, 729, 735, 736, 737, 738, 739 require metal angle reinforced corners.
- Carts and rolling tall storage cabinets with doors, lacking any horizontal and/or vertical stabilizing dividers, require a diaphragm bottom; specifically Cabinet Design Series #'s 702, 712, 716, 722, 743, 744, 746, 747, 750, and 751.

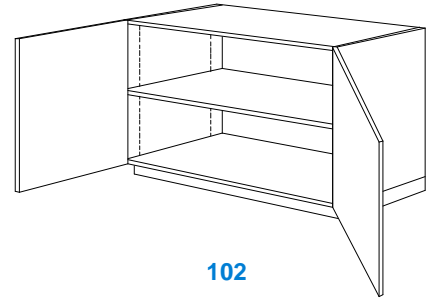
100 SERIES, BASE CABINETS w/o DRAWERS



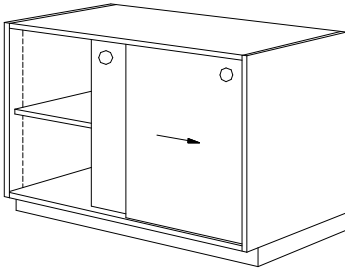
100
Open



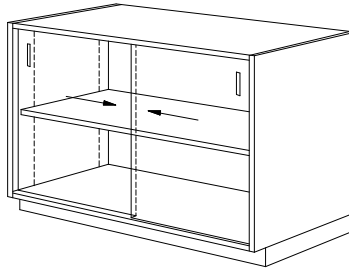
101



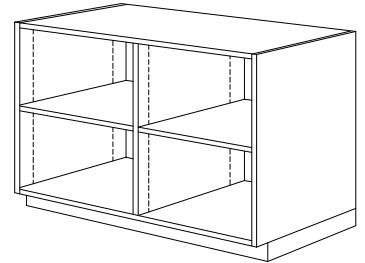
102



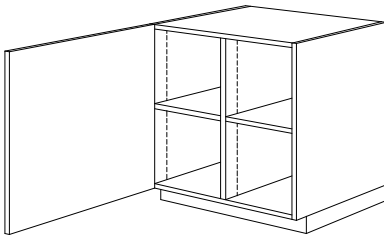
106
3/4" Sliding Doors
without Vertical Divider



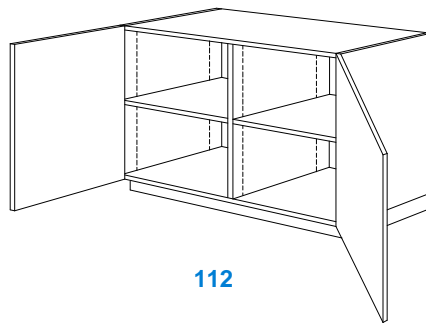
107
1/4" Sliding Glass Doors



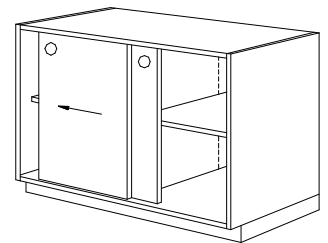
110
Open



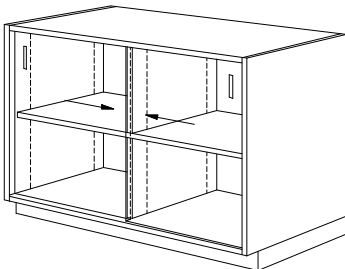
111



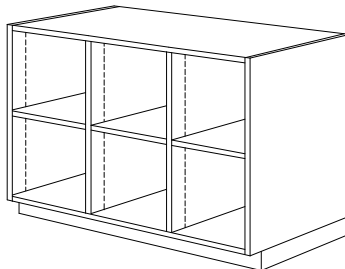
112



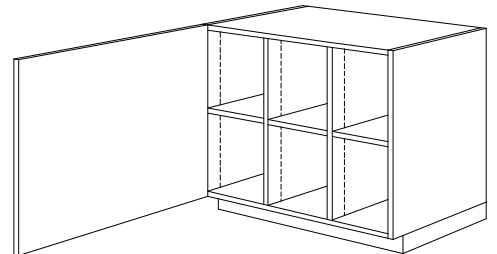
116
3/4" Sliding Doors
with Vertical Divider



117
1/4" Sliding Glass Doors



120
Open

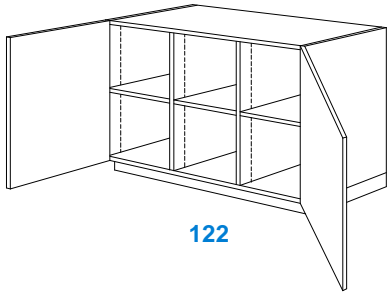


121

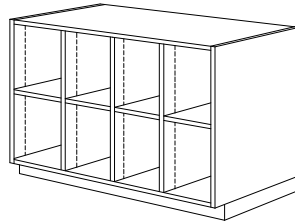
NOTE: These drawings are available as **Autodesk® Revit®** Families and **AutoCAD®** “.DWG” and “.DXF” files at <http://www.woodworkinstitute.com/manual.asp> or with our CD Rom version of the **MANUAL**.

100 SERIES, BASE CABINETS w/o DRAWERS

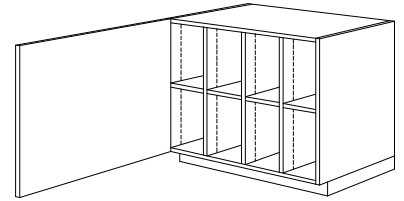
(Continued)



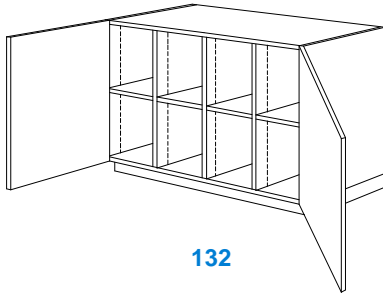
122



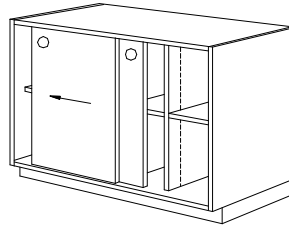
130



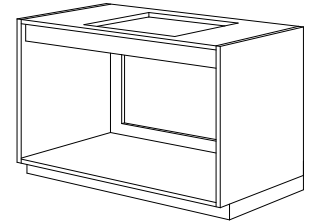
131



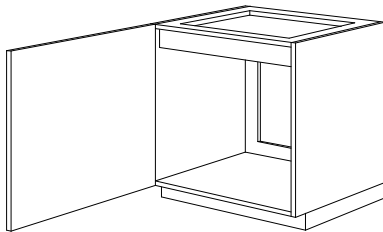
132



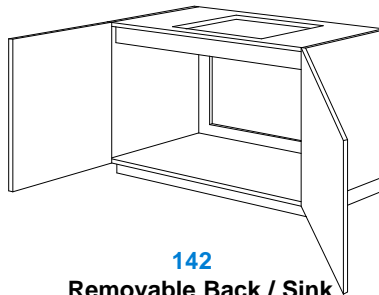
136
3/4" Sliding Doors



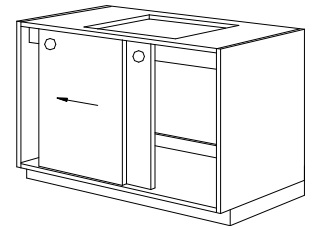
140
Open / Sink
Removable Back
4" Apron



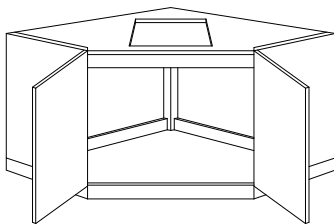
141
Removable Back / Sink
4" Apron Behind Door



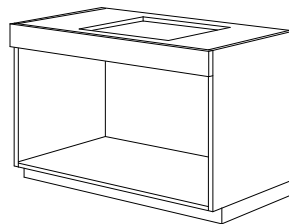
142
Removable Back / Sink
4" Apron Behind Doors



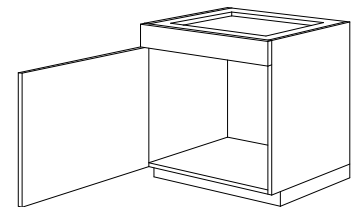
146
Removable Back / Sink
3/4" Sliding Doors
4" Apron Behind Doors



148
Removable Back / Sink
4" Apron Behind Doors



150
Sink / 6" Apron

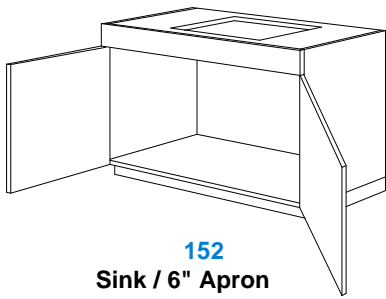


151
Sink / 6" Apron

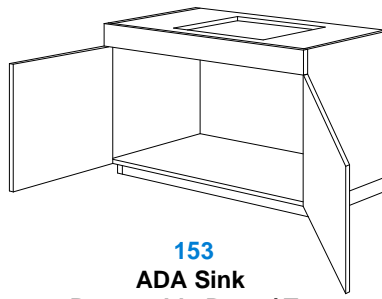
NOTE: These drawings are available as **Autodesk® Revit®** Families and **AutoCAD®** “.DWG” and “.DXF” files at <http://www.woodworkinstitute.com/manual.asp> or with our CD Rom version of the **MANUAL**.

100 SERIES, BASE CABINETS w/o DRAWERS

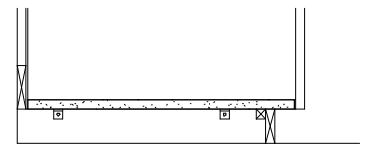
(Continued)



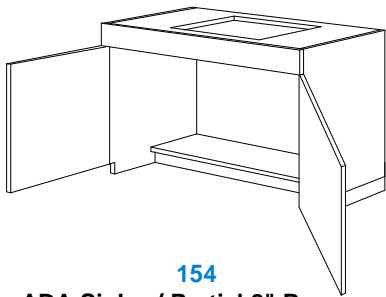
152
Sink / 6" Apron



153
ADA Sink
Removable Base / Toe



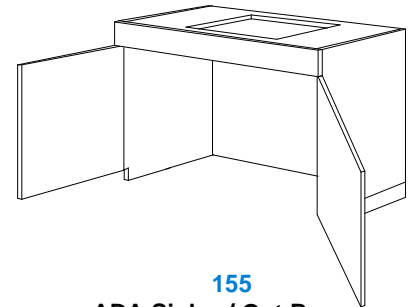
153a
Section Detail of
Removable Base / Toe
Supported on Clips



154
ADA Sink w/ Partial 8" Base



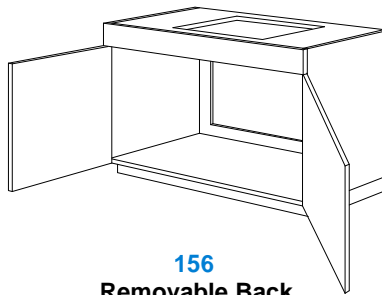
154a
Section Detail of
Partial 8" Deep Base



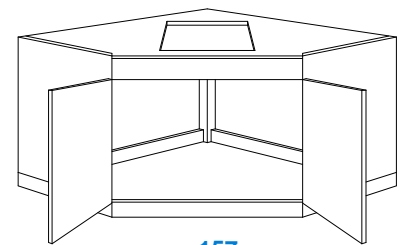
155
ADA Sink w/ Out Base



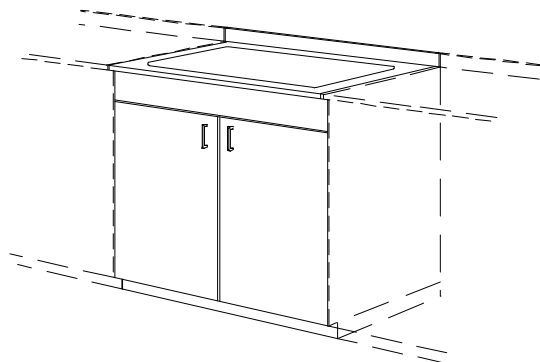
155a
Section Detail of
No Base



156
Removable Back
Sink / 6" Apron



157
Removable Back
Sink / 6" Apron



158
ADA Removeable Cabinet Front, Base
and Height Adjustable Countertop

NOTES FOR CABINET 158:

Cabinet doors and sink apron mounted to a removable (for ADA compliance) frame, secured to adjoining wall or cabinets to the left and right.

Base removable for ADA compliance.

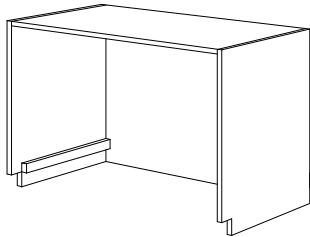
Countertop to be self contained with side mounting cleats which can be used to secure it at standard and ADA compliant height requirements.

Ends of adjoining countertops and cabinets shall be flush and considered finished ends.

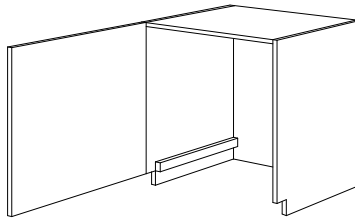
NOTE: These drawings are available as **Autodesk® Revit®** Families and **AutoCAD® .DWG** and **.DXF** files at <http://www.woodworkinstitute.com/manual.asp> or with our CD Rom version of the **MANUAL**.

100 SERIES, BASE CABINETS w/o DRAWERS

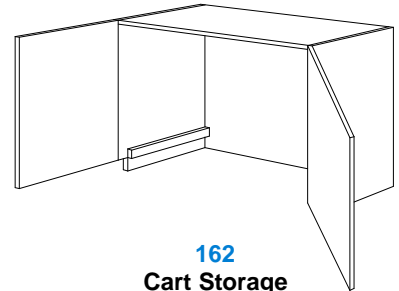
(Continued)



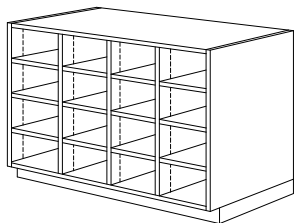
160
Cart Storage
Hardwood Side Guides



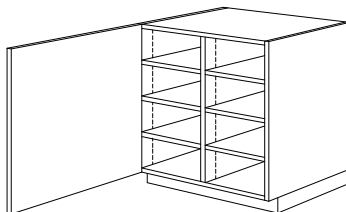
161
Cart Storage
Hardwood Side Guides



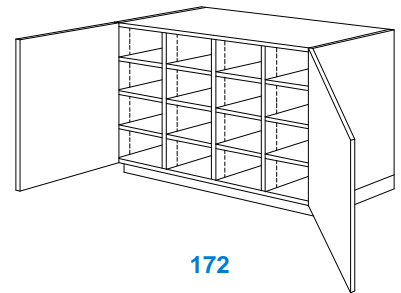
162
Cart Storage
Hardwood Side Guides



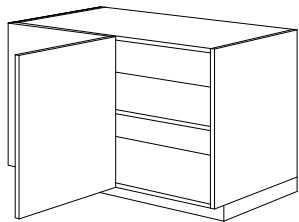
170
Open



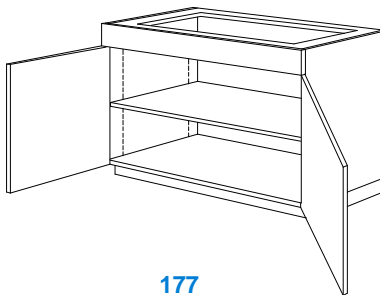
171



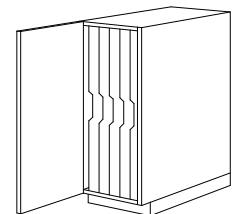
172



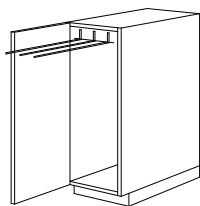
176
Blind Corner



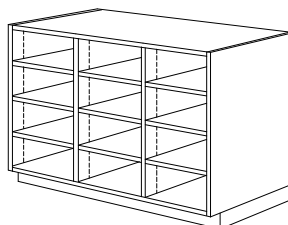
177



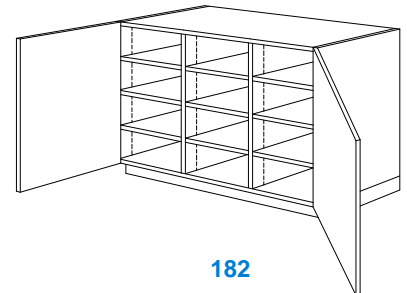
178
Range Tray Storage
1/4" Dividers



179
Retractable Towel Rack



180
Open

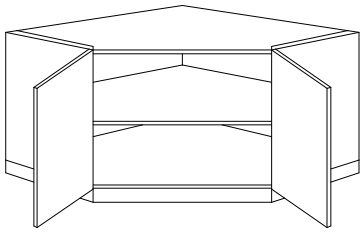


182

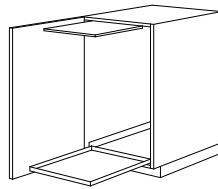
NOTE: These drawings are available as **Autodesk® Revit®** Families and **AutoCAD® “.DWG”** and **“.DXF”** files at <http://www.woodworkinstitute.com/manual.asp> or with our CD Rom version of the **MANUAL**.

100 SERIES, BASE CABINETS w/o DRAWERS

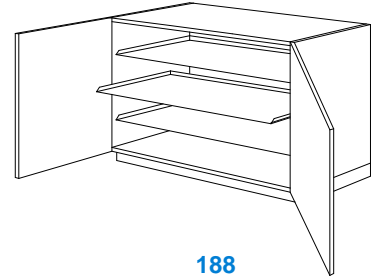
(Continued)



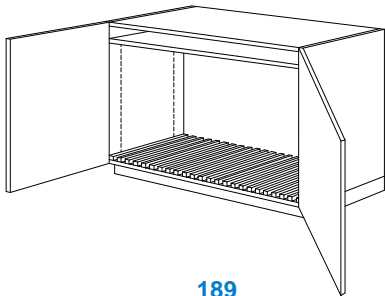
186
Corner



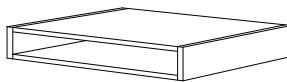
187
Sliding Tray &
Lift Up Shelf



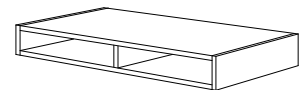
188
Sliding Trays



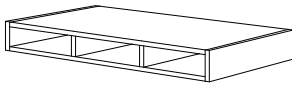
189
Drawing Board Rack



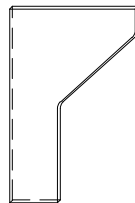
190
Storage Apron



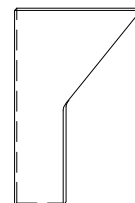
191
Storage Apron



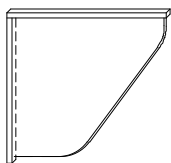
192
Storage Apron



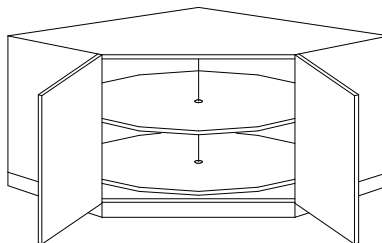
193
Countertop Support
Floor & Wall Mounted



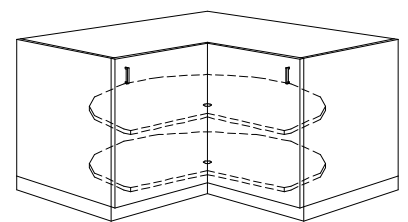
194
Countertop Support
Floor & Wall Mounted



195
Countertop Support
Wall Mounted



196
Corner / Lazy Susan

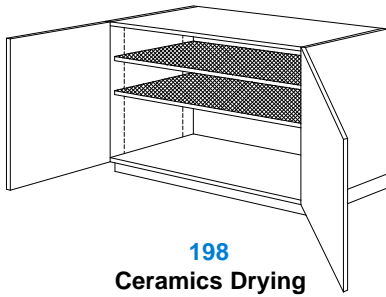


197
Corner / Lazy Susan

NOTE: These drawings are available as **Autodesk® Revit®** Families and **AutoCAD® “.DWG”** and **“.DXF”** files at <http://www.woodworkinstitute.com/manual.asp> or with our CD Rom version of the **MANUAL**.

100 SERIES, BASE CABINETS w/o DRAWERS

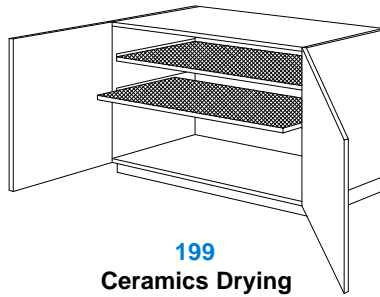
(Continued)



198

Ceramics Drying

Includes Adjustable Metal Frame
Shelves w/ Galvanized Wire Mesh



199

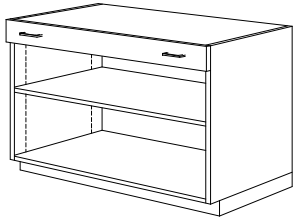
Ceramics Drying

Includes Sliding Metal Frame
Shelves w/ Galvanized Wire Mesh

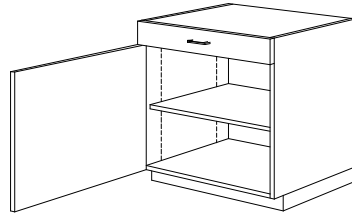
NOTES

NOTE: These drawings are available as **Autodesk® Revit®** Families and **AutoCAD® “.DWG”** and **“.DXF”** files at <http://www.woodworkinstitute.com/manual.asp> or with our CD Rom version of the **MANUAL**.

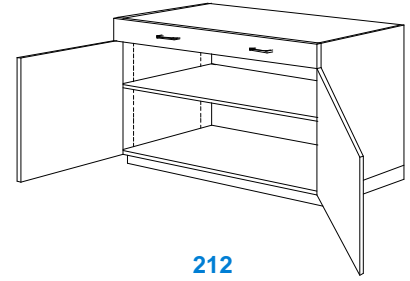
200 SERIES, BASE CABINETS with DRAWERS



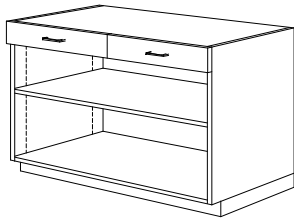
210
Open, Single Drawer



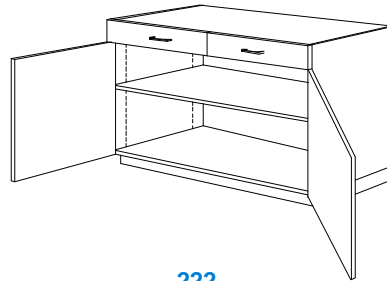
211



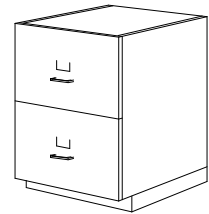
212
Single Drawer



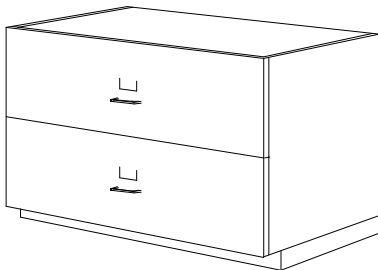
220
Open, Two Drawers



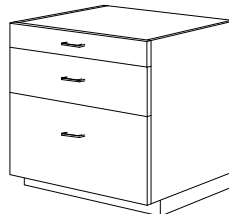
222
Two Drawers



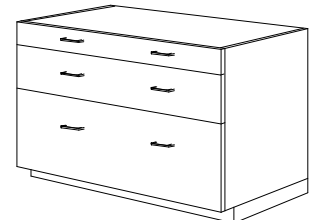
223
File Drawers w/ Full
Extension Slides and File
Follower or Hanging System



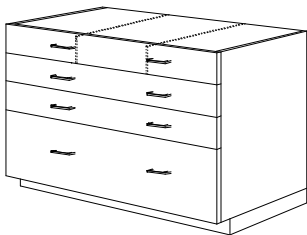
224
File Drawers w/ Full
Extension Slides and File
Follower or Hanging System



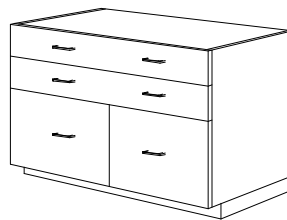
230
File Drawers w/ Full
Extension Slides and File
Follower or Hanging System



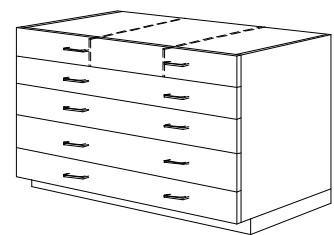
231
File Drawers w/ Full
Extension Slides and File
Follower or Hanging System



240
Top Drawer Divided into Three
Equal Spaces Left to Right



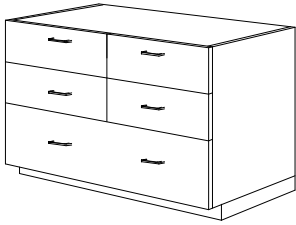
242
File Drawers w/ Full
Extension Slides and File
Follower or Hanging System



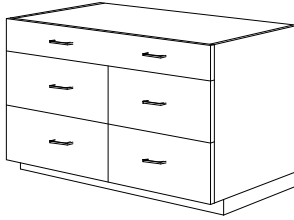
250
Top Drawer Divided into Three
Equal Spaces Left to Right

NOTE: These drawings are available as **Autodesk® Revit®** Families and **AutoCAD® “.DWG”** and **“.DXF”** files at <http://www.woodworkinstitute.com/manual.asp> or with our CD Rom version of the **MANUAL**.

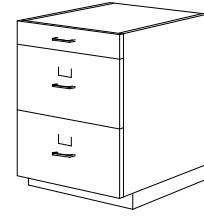
200 SERIES, BASE CABINETS with DRAWERS



251



252

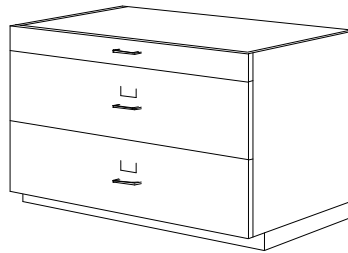


253

File Drawers w/ Full Extension Slides and File Follower or Hanging System

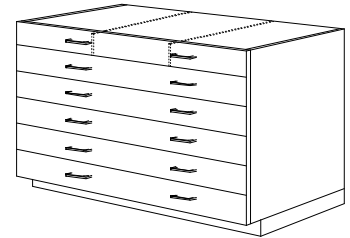


254



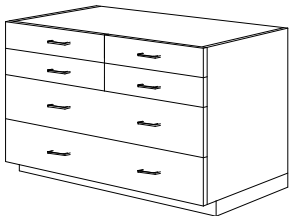
255

File Drawers w/ Full Extension Slides and File Follower or Hanging System



260

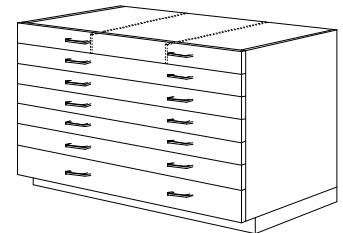
Top Drawer Divided into Three Equal Spaces Left to Right



261

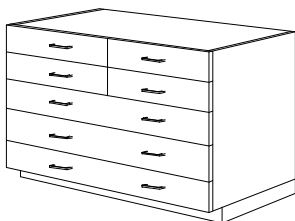


262



270

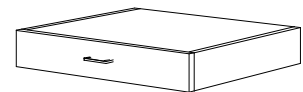
Top Drawer Divided into Three Equal Spaces Left to Right



271



272

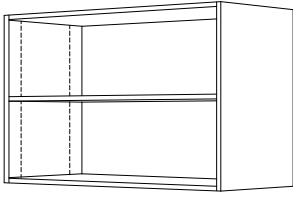


290

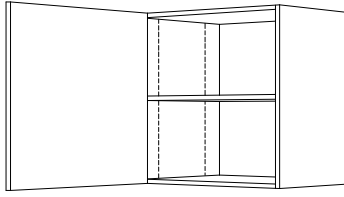
Drawer Apron

NOTE: These drawings are available as **Autodesk® Revit®** Families and **AutoCAD® “.DWG”** and **“.DXF”** files at <http://www.woodworkinstitute.com/manual.asp> or with our CD Rom version of the **MANUAL**.

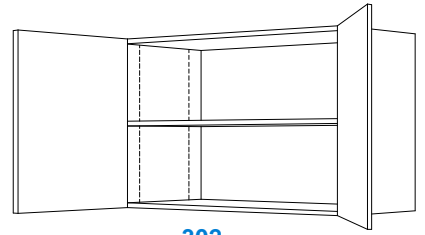
300 SERIES, WALL HUNG CABINET



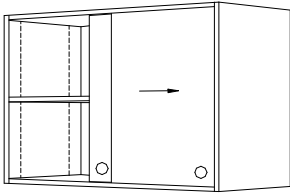
300
Open



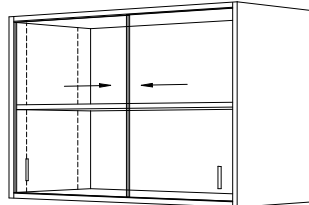
301



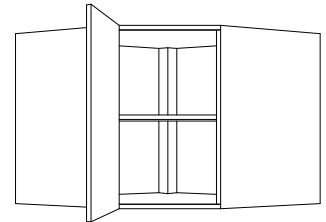
302



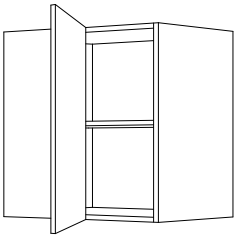
306
3/4" Sliding Doors



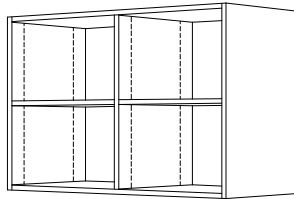
307
1/4" Glass Sliding Doors



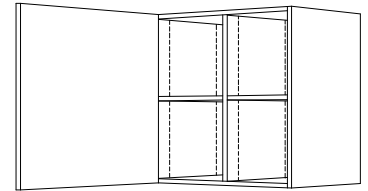
308
Angle Corner



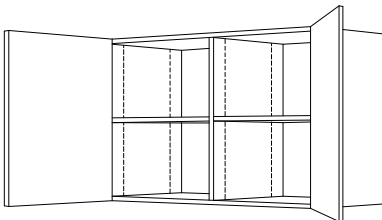
309
Blind Corner



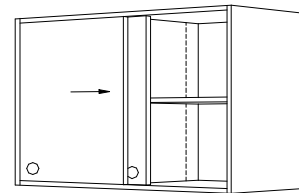
310
Open



311



312

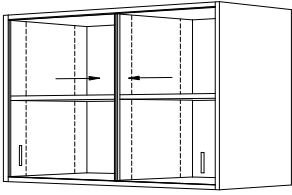


316
3/4" Sliding Doors

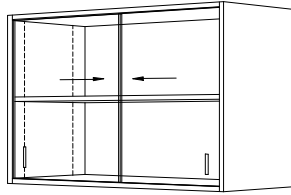
NOTE: These drawings are available as **Autodesk Revit** Families and **AutoCAD ".DWG"** and **".DXF"** files at <http://www.woodworkinstitute.com/manual.asp> or with our CD Rom version of the **MANUAL**.

300 SERIES, WALL HUNG CABINET

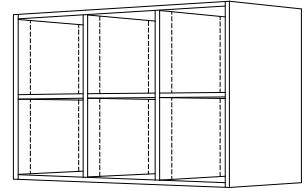
(Continued)



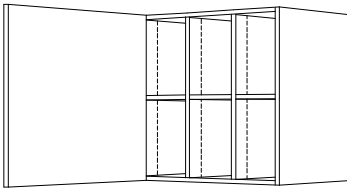
317
1/4" Glass Sliding Doors



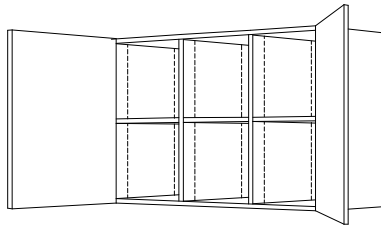
318
1/4" Glass Sliding Doors &
1/4" Glass Back w/ Removable Stops



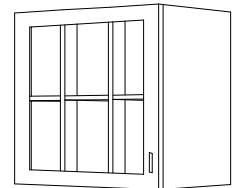
320
Open



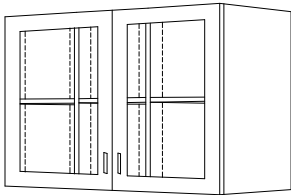
321



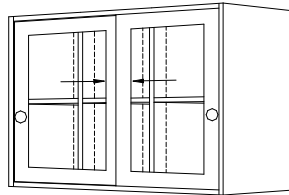
322



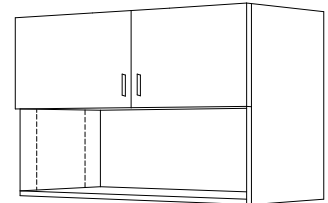
323
3/4" Glass S & R Door



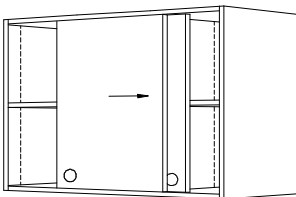
324
3/4" Glass S & R Doors



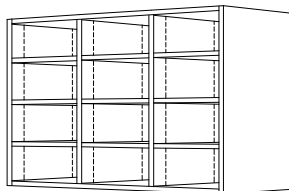
325
3/4" Sliding Glass S & R Doors



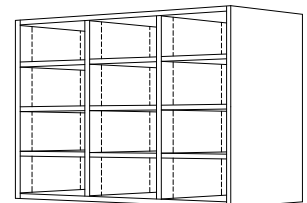
326
Partial Open



336
3/4" Sliding Doors



340
Cubicles

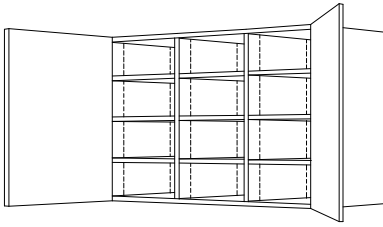


341
Cubicles
(Open back)

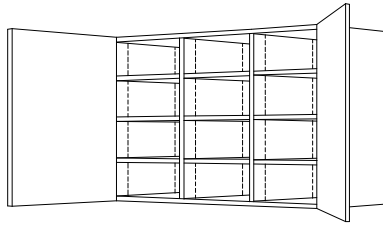
NOTE: These drawings are available as **Autodesk® Revit®** Families and **AutoCAD® .DWG** and **.DXF** files at <http://www.woodworkinstitute.com/manual.asp> or with our CD Rom version of the **MANUAL**.

300 SERIES, WALL HUNG CABINET

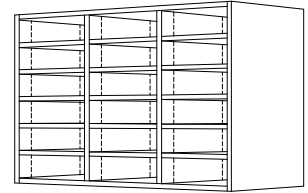
(Continued)



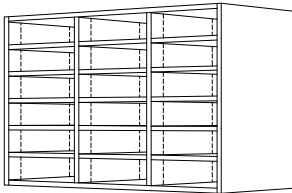
342
Cubicles



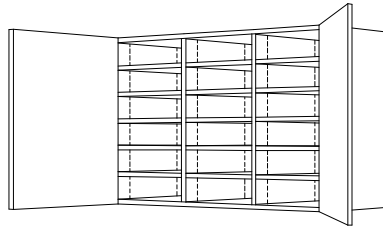
343
Cubicles
(Open back)



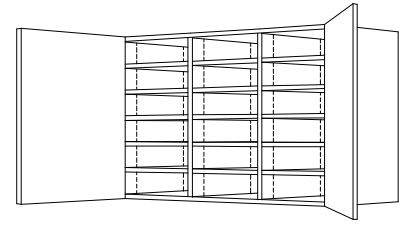
350
Mail Boxes w/
1/4" Shelves



351
Mail Boxes w/
1/4" Shelves
(Open back)



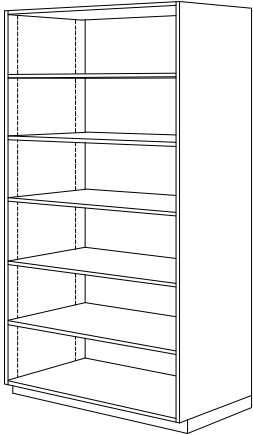
352
Mail Boxes w/
1/4" Shelves



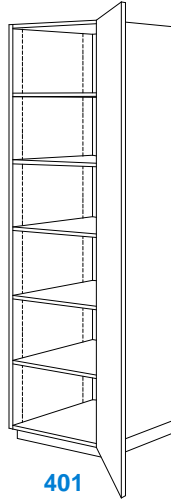
353
Mail Boxes w/
1/4" Shelves
(Open back)

NOTE: These drawings are available as **Autodesk® Revit®** Families and **AutoCAD® .DWG** and **.DXF** files at <http://www.woodworkinstitute.com/manual.asp> or with our CD Rom version of the **MANUAL**.

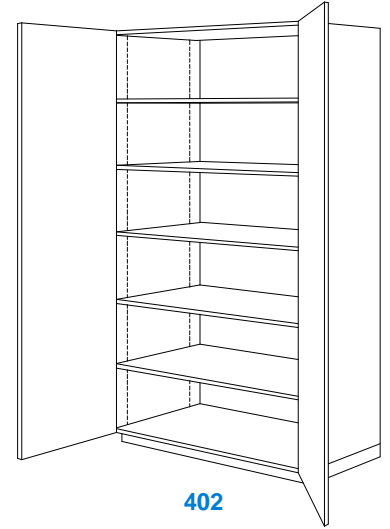
400 SERIES, TALL STORAGE CABINETS



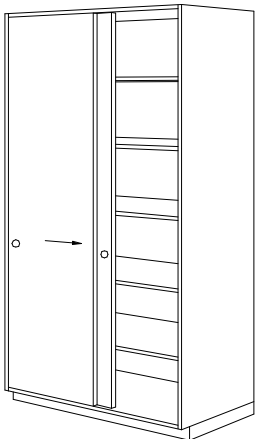
400



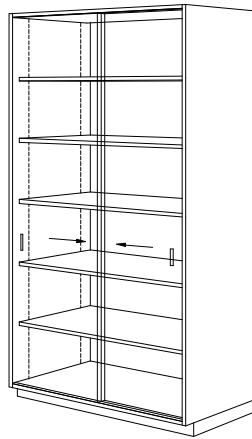
401



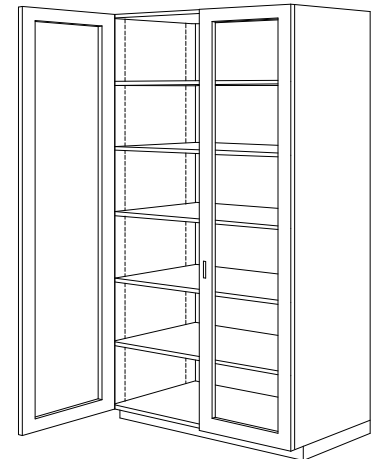
402



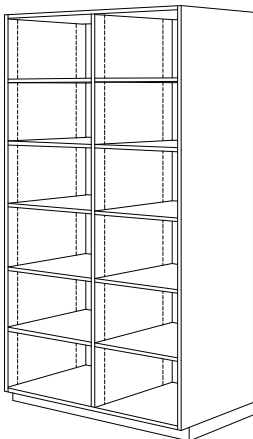
406
3/4" Sliding Doors



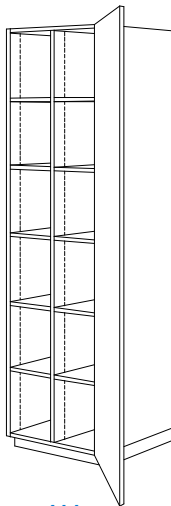
407
1/4" Sliding Glass Doors



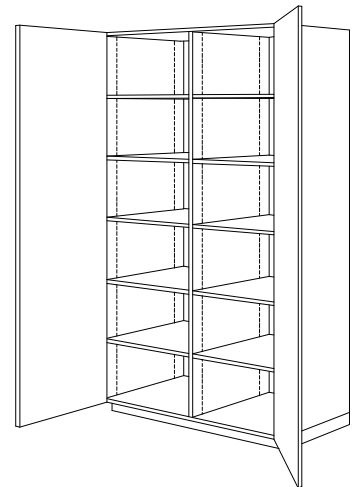
408
3/4" S & R Glass Doors



410



411

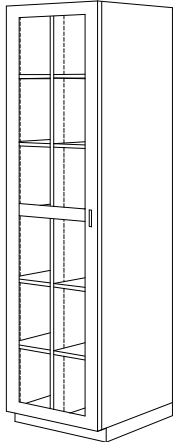


412

NOTE: These drawings are available as **Autodesk® Revit®** Families and **AutoCAD®** “.DWG” and “.DXF” files at <http://www.woodworkinstitute.com/manual.asp> or with our CD Rom version of the **MANUAL**.

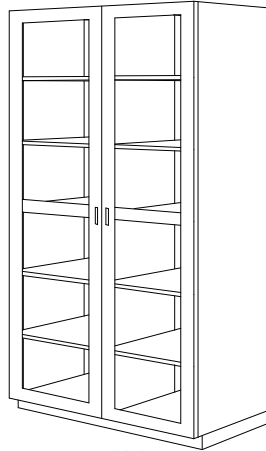
400 SERIES, TALL STORAGE CABINETS

(Continued)



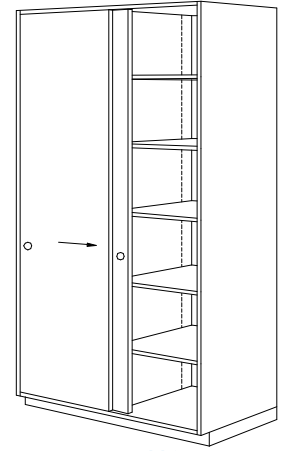
413

3/4" S & R Glass Doors



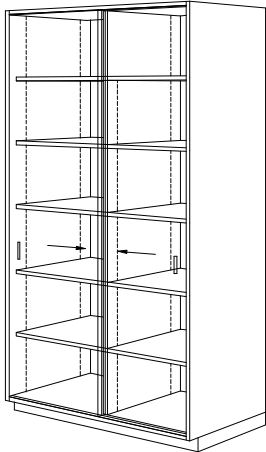
414

3/4" S & R Glass Doors



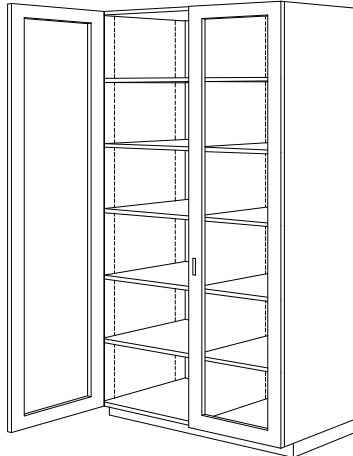
416

3/4" Sliding Doors



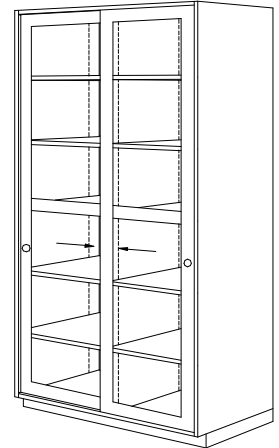
417

1/4" Sliding Glass Doors



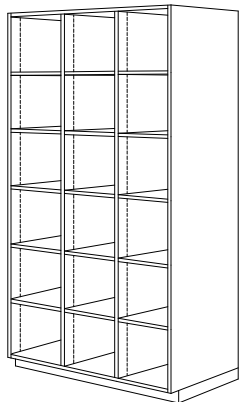
418

3/4" S & R Glass Doors

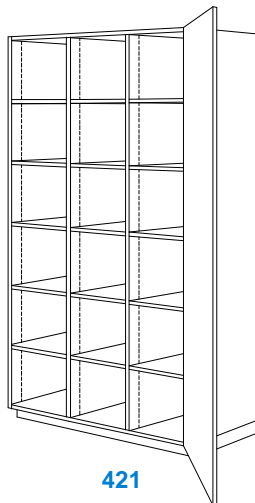


419

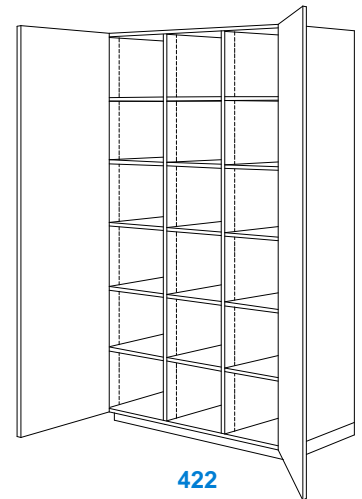
3/4" Sliding
S & R Glass Doors



420



421

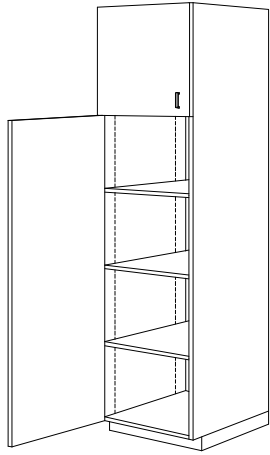


422

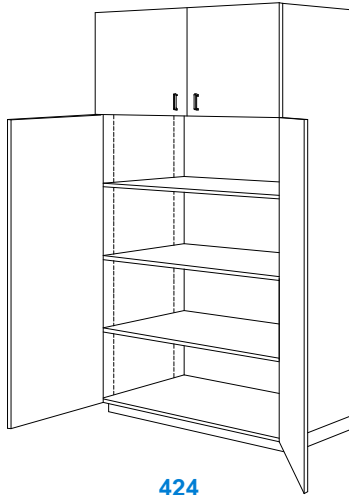
NOTE: These drawings are available as **Autodesk® Revit®** Families and **AutoCAD® “.DWG”** and **“.DXF”** files at <http://www.woodworkinstitute.com/manual.asp> or with our CD Rom version of the **MANUAL**.

400 SERIES, TALL STORAGE CABINETS

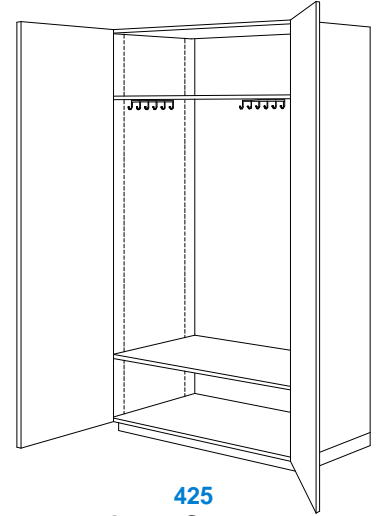
(Continued)



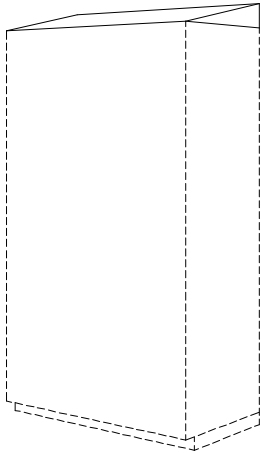
423
Split Height



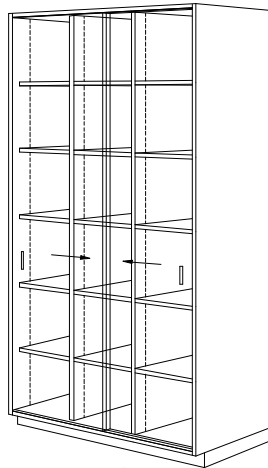
424
Split Height



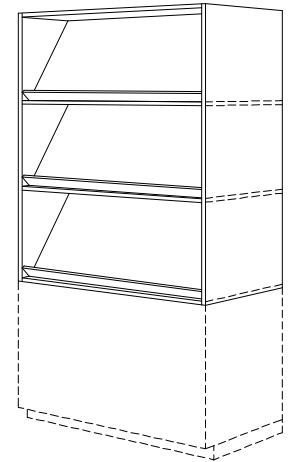
425
Apron Storage
Pull Out Hooks



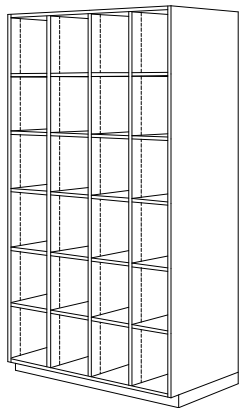
426
Dust Panel
Integral or Separate



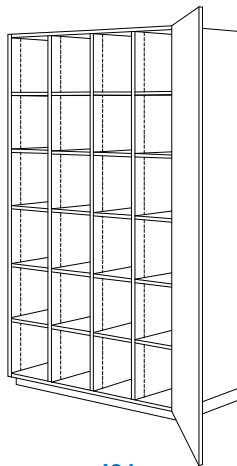
427
1/4" Sliding Glass Doors



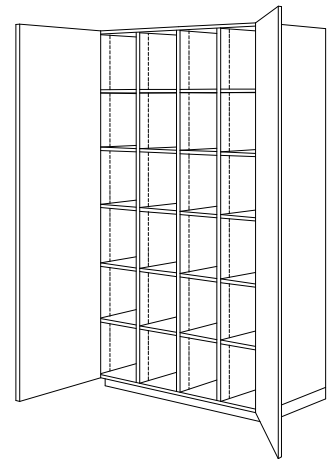
429
Display Hutch w/
Fixed Angled Shelves



430



431

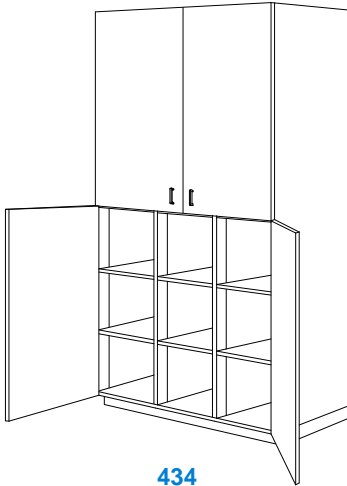


432

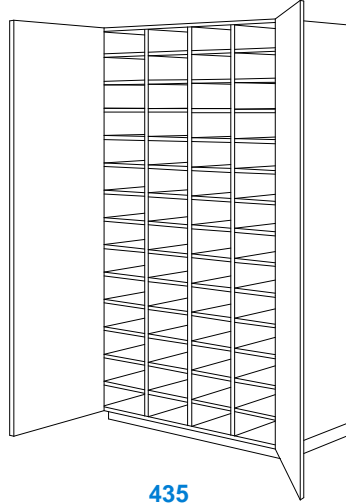
NOTE: These drawings are available as **Autodesk® Revit®** Families and **AutoCAD® “.DWG”** and **“.DXF”** files at <http://www.woodworkinstitute.com/manual.asp> or with our CD Rom version of the **MANUAL**.

400 SERIES, TALL STORAGE CABINETS

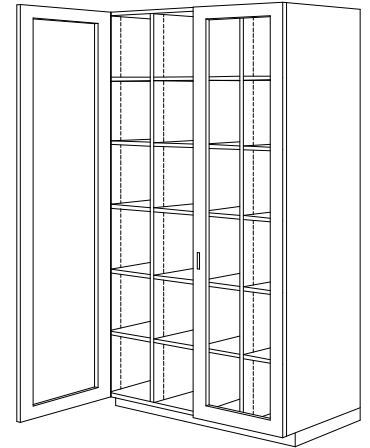
(Continued)



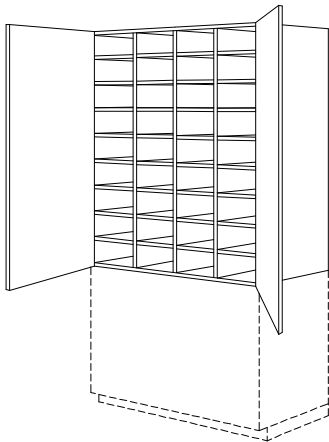
434
Split Height



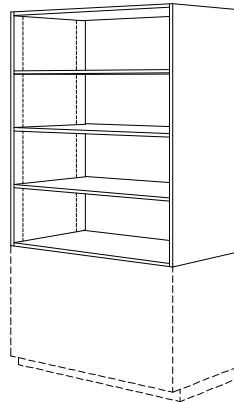
435
Holds 56 Tote Trays
However Tote Trays are NIC



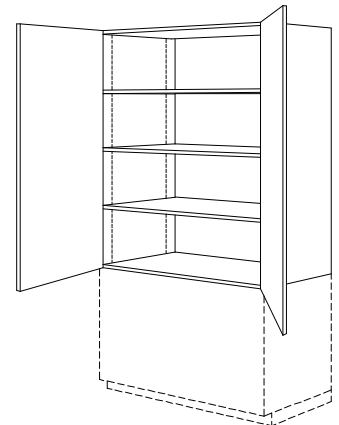
438
3/4" S & R Glass Doors



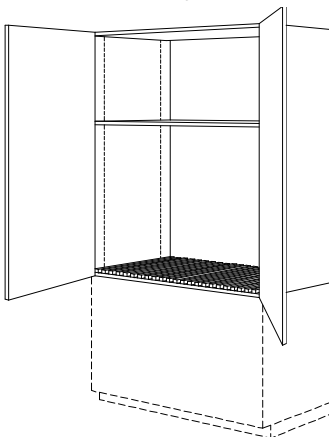
439
Hutch, holds 32 Tote Trays
Tote Trays are NIC



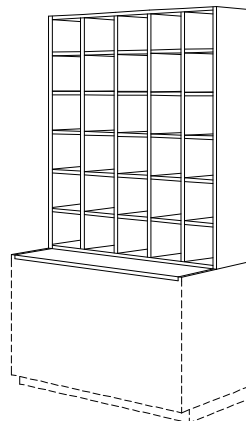
440
Open Hutch



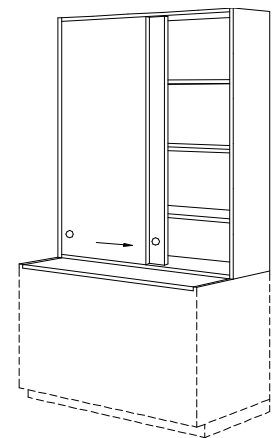
441
Hutch



443
Hutch Drawing Board Storage



444
Hutch w/ Open Cubicles

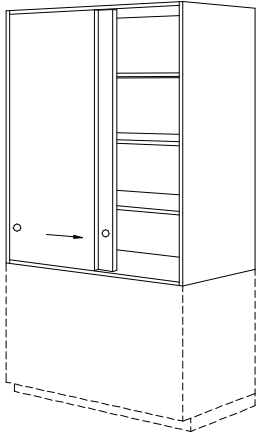


445
Hutch w/ 3/4" Sliding Doors

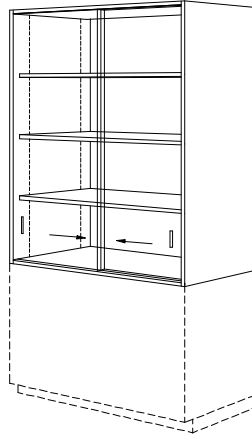
NOTE: These drawings are available as **Autodesk® Revit®** Families and **AutoCAD® “.DWG”** and **“.DXF”** files at <http://www.woodworkinstitute.com/manual.asp> or with our CD Rom version of the **MANUAL**.

400 SERIES, TALL STORAGE CABINETS

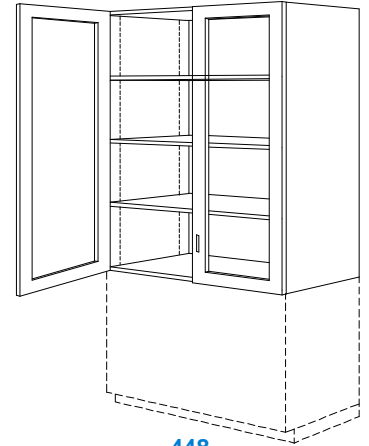
(Continued)



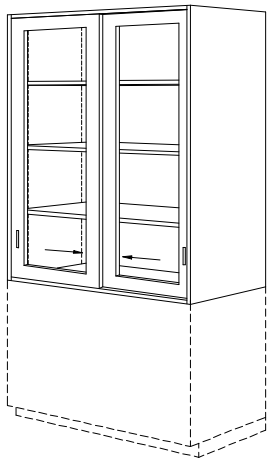
446
Hutch
3/4" Sliding Doors



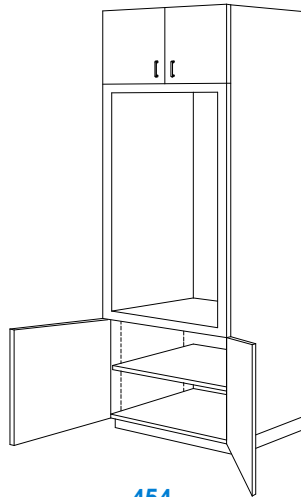
447
Hutch
1/4" Sliding Glass Doors



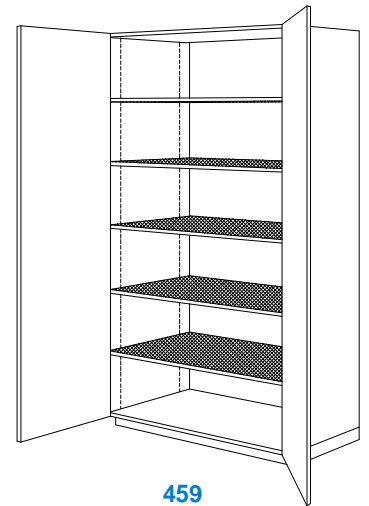
448
Hutch
3/4" S & R Glass Doors



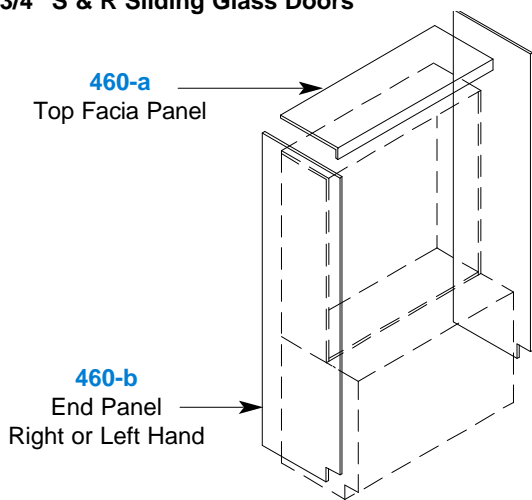
449
Hutch
3/4" S & R Sliding Glass Doors



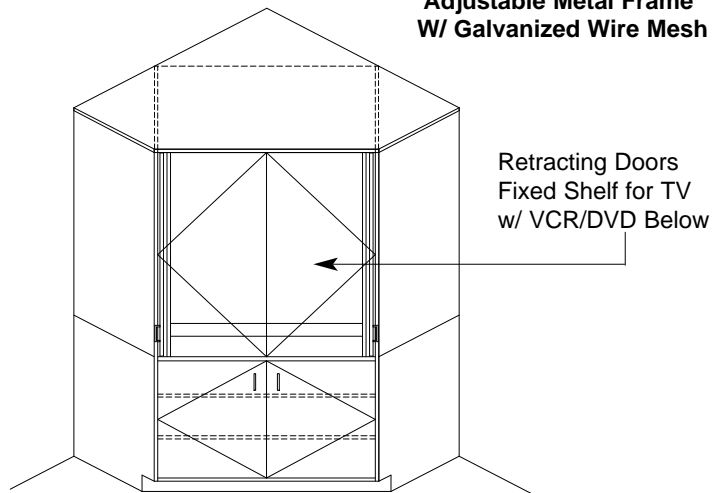
454
Oven Cabinet



459
Ceramic Drying Storage
Adjustable Metal Frame
W/ Galvanized Wire Mesh



460 Presentation Panel Surrounds

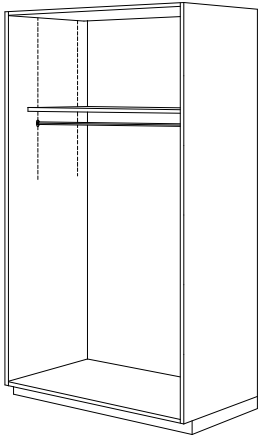


461 Audio Visual Center

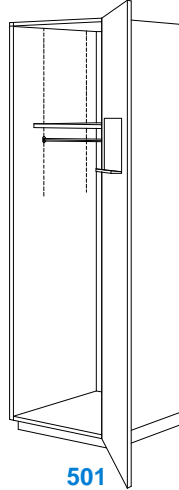
NOTE: These drawings are available as **Autodesk® Revit®** Families and **AutoCAD® “.DWG”** and **“.DXF”** files at <http://www.woodworkinstitute.com/manual.asp> or with our CD Rom version of the **MANUAL**.

500 SERIES, WARDROBE CABINETS

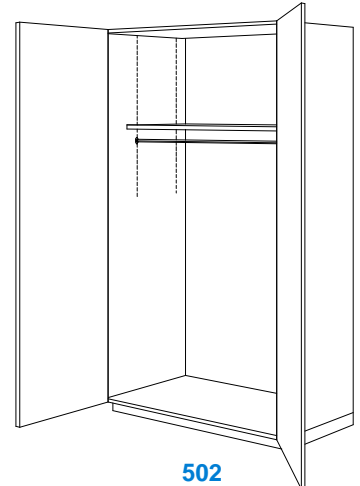
MIRRORS TO BE FRAMED 12" X 14" X 1/4" PLATE, WITH PIN TRAY



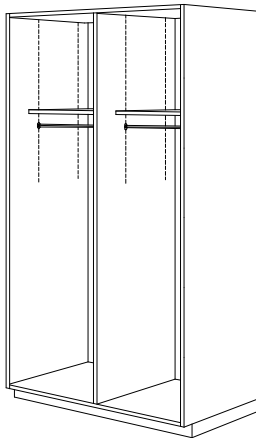
500
Open Wardrobe
Shelf & Pole



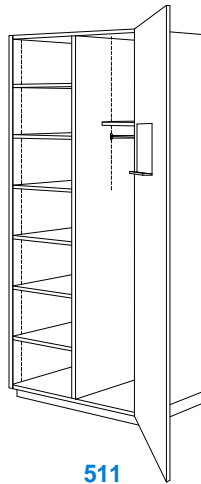
501
Teachers Wardrobe w/
Lock, Shelf, Pole & Mirror



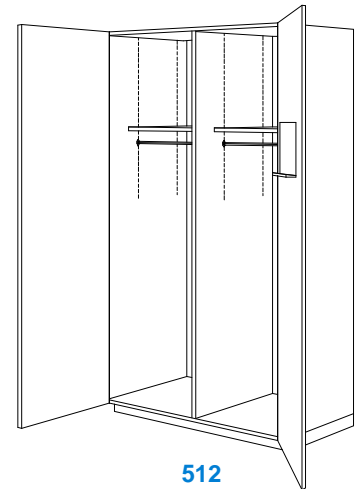
502
Student Wardrobe
Shelf & Pole



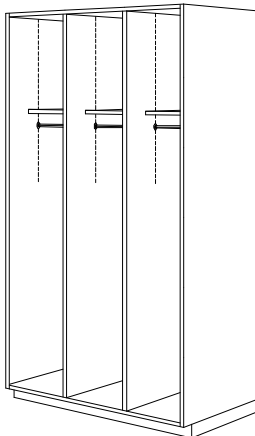
510
Open Wardrobe
Shelf & Pole



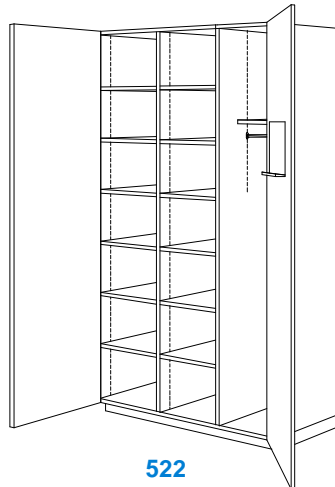
511
Split Unit, Shelves / Wardrobe
w/ Shelf, Pole, Mirror & Lock



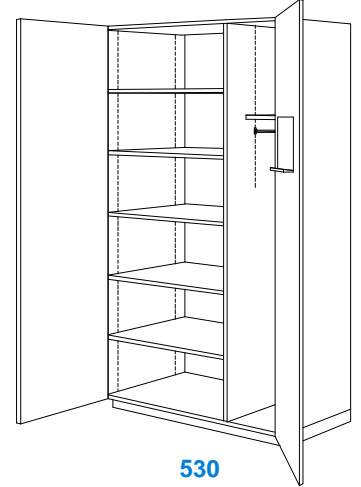
512
Dual Wardrobe
Shelf, Pole, Mirror & Lock



520
Triple Open Wardrobe
Shelf & Pole



522
Wardrobe & Cubicles
Shelves, Pole, Mirror & Lock



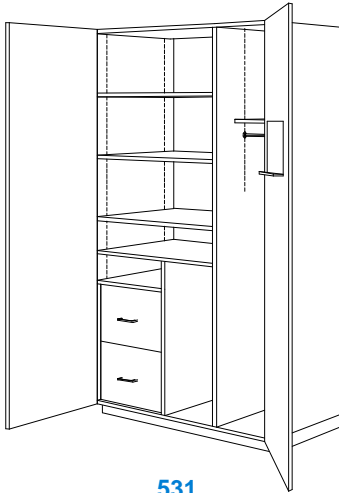
530
Wardrobe & Shelving
Shelves, Pole, Mirror & Lock

NOTE: These drawings are available as **Autodesk® Revit®** Families and **AutoCAD® “.DWG”** and **“.DXF”** files at <http://www.woodworkinstitute.com/manual.asp> or with our CD Rom version of the **MANUAL**.

500 SERIES, WARDROBE CABINETS

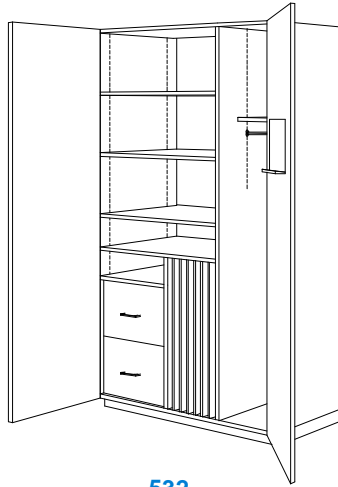
(Continued)

MIRRORS TO BE FRAMED 12" X 14" X 1/4" PLATE, WITH PIN TRAY



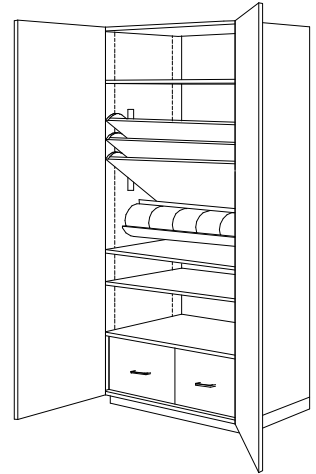
531

Teacher Center w/ Lock Shelves, Pole & Mirror
2 Legal File Drawers



532

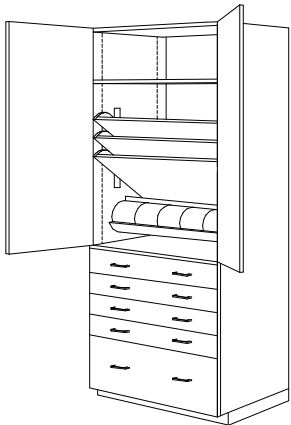
Teacher Center w/ Lock Shelves, Pole & Mirror
2 Legal File Drawers & 1/4" Dividers



533

Teacher Center w/ Lock, Slide Out Tilting Paper Shelves*, Paper Roller & 2 Legal File Drawers

NOTE: Drawers in cabinets 531-533 shall be spaced away from cabinet ends up to 1" to allow for proper functionality when doors are in the ninety degree open position.



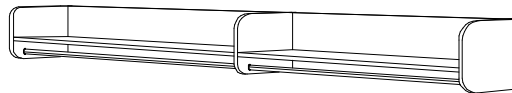
534

Teacher Center w/ Lock, Slide Out Tilting Paper Shelves*, Paper Roller & Misc. Drawers



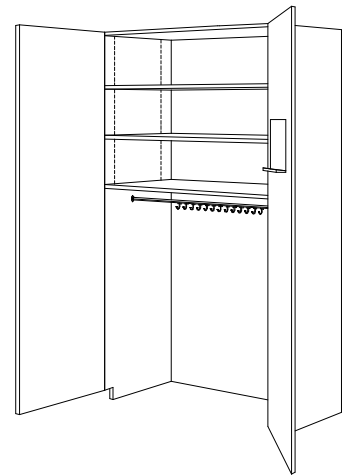
540

Hanging Wardrobe Shelf & Pole



541

Double Hanging Wardrobe Shelf & Pole



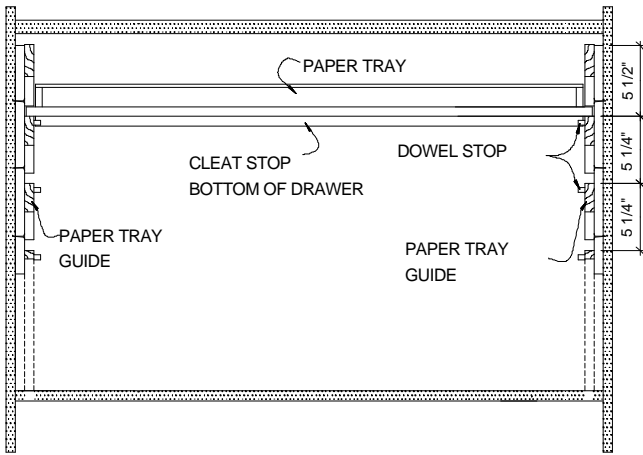
552

Student Wardrobe w/ 15 Wall Hooks, Shelves, Ceiling Hooks or Pole

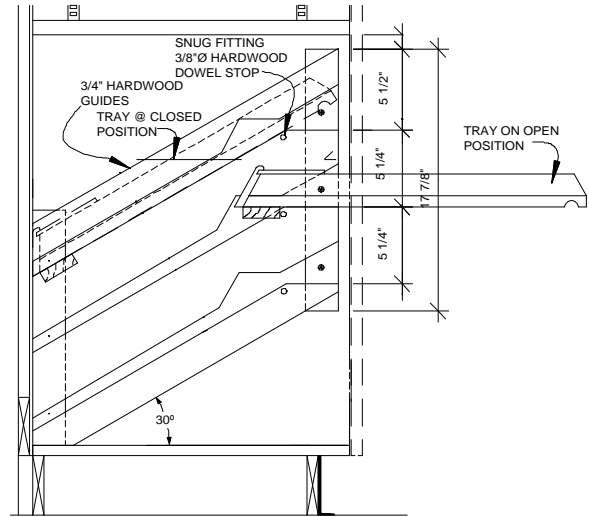
* See Slide Out Tilting Paper Shelf details on next page in this Supplement 2

NOTE: These drawings are available as **Autodesk® Revit®** Families and **AutoCAD® .DWG** and **.DXF** files at <http://www.woodworkinstitute.com/manual.asp> or with our CD Rom version of the **MANUAL**.

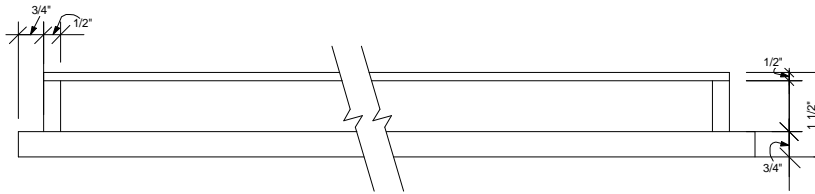
TYPICAL SLIDE OUT/TILTING PAPER SHELF DETAILS



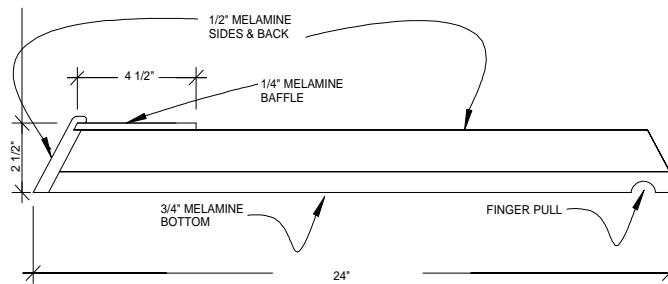
**Paper Tray Guide System
Front View**



**Paper Tray Guide System
Side View**



Paper Tray - Front View



Paper Tray - Side View

NOTE: These drawings are available as **Autodesk® Revit®** Families and **AutoCAD® “.DWG”** and **“.DXF”** files at <http://www.woodworkinstitute.com/manual.asp> or with our CD Rom version of the **MANUAL**.

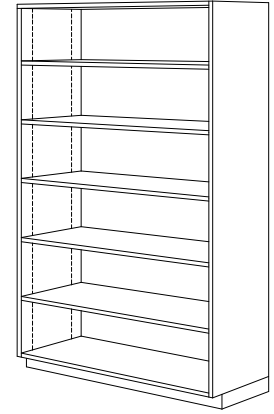
600 SERIES, LIBRARY CABINETS
 SEE PAGE 21 OF THIS SUPPLEMENT FOR 600 SERIES NOTES



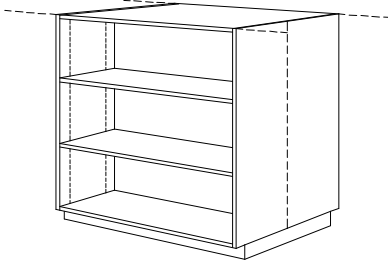
600 w/ or 605 w/o Back
 42" in Height including Top



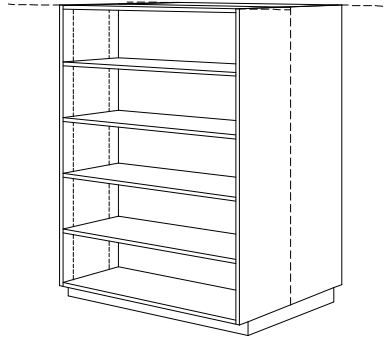
601 w/ or 606 w/o Back
 60-1/2" Height including Top
 Side View



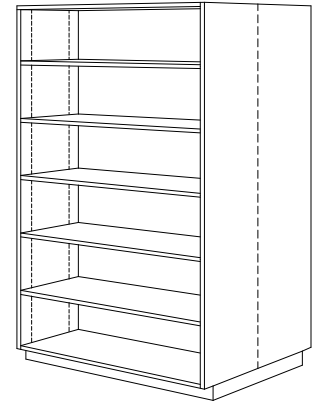
602 w/ or 607 w/o Back
 72", 80" or 84" Height



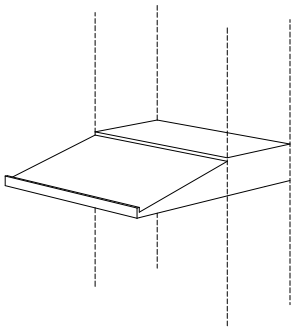
620 w/ or 625 w/o Back
 42" in Height including Top
 Back Same as Front



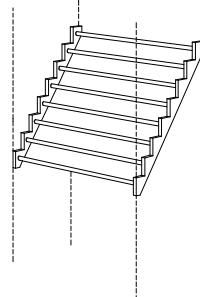
621 w/ or 626 w/o Back
 60-1/2" Height including Top
 Back Same as Front



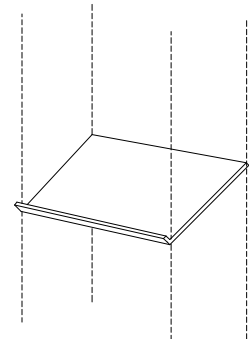
622 w/ or 627 w/o Back
 72", 80" or 84" Height
 Back Same as Front



614
 Library of Congress Shelf



624
 Newspaper Rack
 Hardwood Dowels



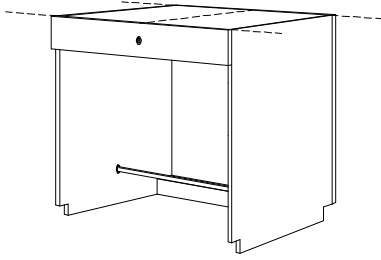
634
 Display Shelf

UNITS 614, 624 and 634 ARE INSERTS FOR THE ABOVE BOOK CASES

NOTE: These drawings are available as **Autodesk® Revit®** Families and **AutoCAD® ".DWG"** and **".DXF"** files at <http://www.woodworkinstitute.com/manual.asp> or with our CD Rom version of the **MANUAL**.

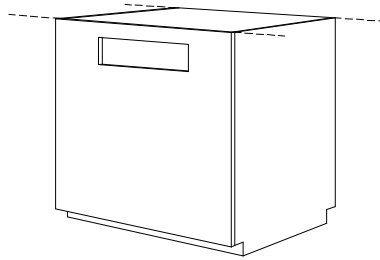
600 SERIES, LIBRARY CABINETS

(Continued)



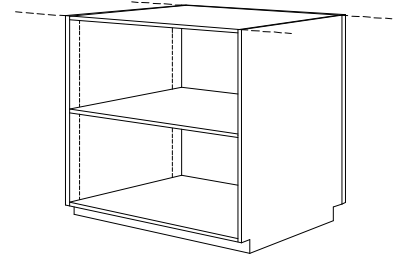
640

**Charge Desk w/ Foot Rest,
Locked & Divided Top Drawer
w/ Cash Tray**



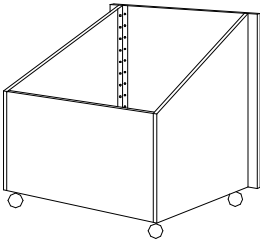
641

Book Return



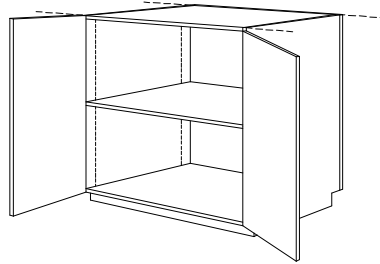
644

Open Base



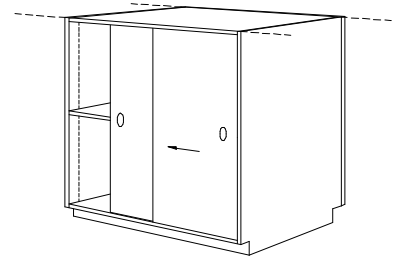
651

**Book Cart, Fits 641
w/ Casters**



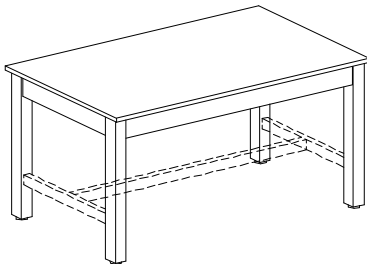
654

Base w/ Doors

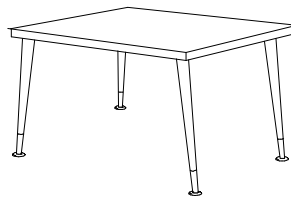


664

Base w/ 3/4" Sliding Doors

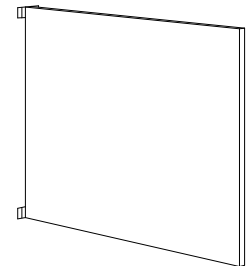


**671-a w/o Lateral Bracing
671-b w/ Lateral Bracing
Table**



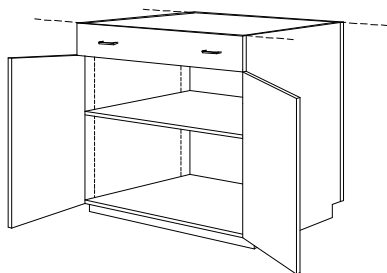
672

Table



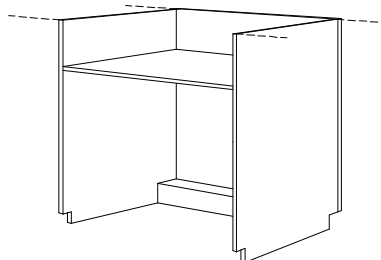
673

Gate



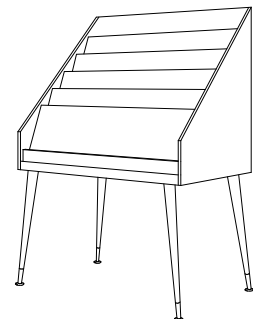
674

Base w/ Drawer



681

Desk

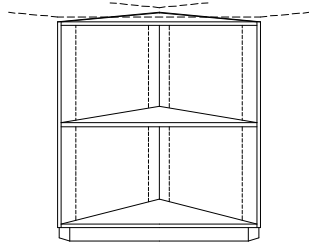


**682 or 692 w/ 18" Legs
Magazine Rack**

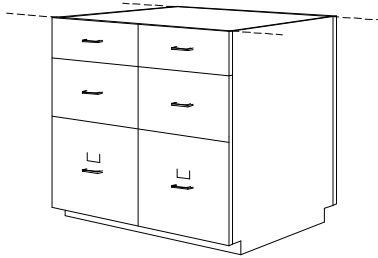
NOTE: These drawings are available as **Autodesk® Revit®** Families and **AutoCAD® “.DWG”** and **“.DXF”** files at <http://www.woodworkinstitute.com/manual.asp> or with our CD Rom version of the **MANUAL**.

600 SERIES, LIBRARY CABINETS

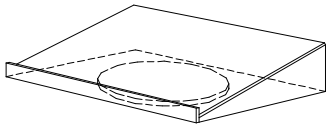
(Continued)



683
Corner



684
Base w/ File Drawers on Full Extension Slides w/ File Follower or Hanging System



693
Dictionary Stand w/ Swivel Base

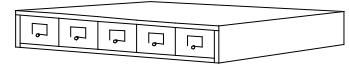
NOTES

All Finished Backs in Panels or Continuous Lengths.
Kick Spaces Front, Back & at Exposed Ends Typical.
Card File System for 3" x 5" cards with built in follower.

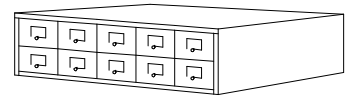
CARD FILE SYSTEM



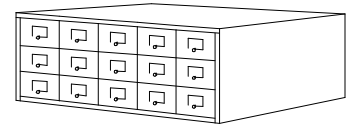
642
Top



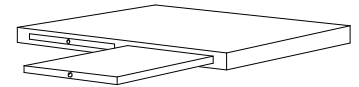
643
Card Files, 5-3/4" High



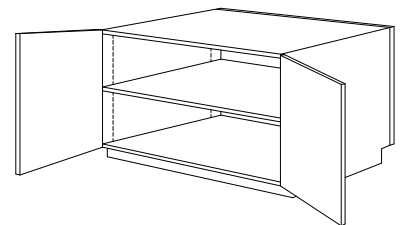
653
Card File, 10-3/4" High



663
Card File, 15-3/4" High



652
Slide Shelf, 2-5/8" High

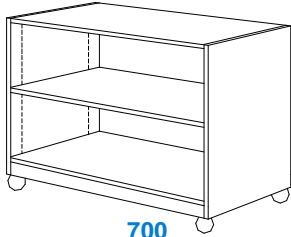


662
27" High Base for Card Files

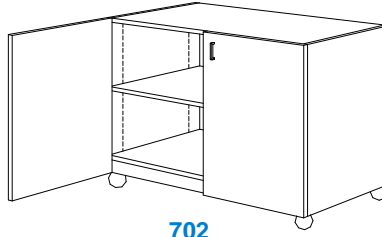
NOTE: These drawings are available as **Autodesk® Revit®** Families and **AutoCAD® .DWG** and **.DXF** files at <http://www.woodworkinstitute.com/manual.asp> or with our CD Rom version of the **MANUAL**.

700 SERIES, MOVEABLE CABINETS

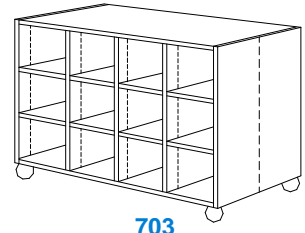
NOTE: All moveable units to be equipped with adequate WIC-approved casters for the intended load capacity.
SEE PAGE 1 OF THIS SUPPLEMENT FOR ADDITIONAL 700 SERIES NOTES



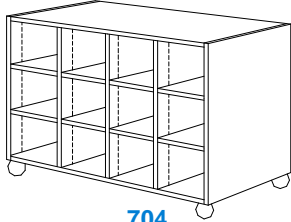
700
Open Base



702
Base w/ Doors
Diaphragm bottom required



703
Base w/ Two Sides
Of Cubicles

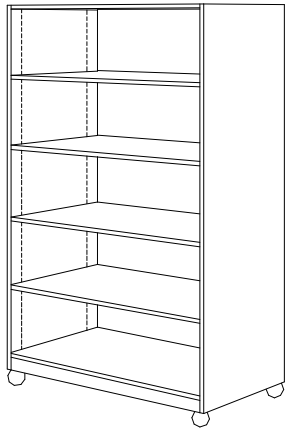


704
Base w/ One Side
of Cubicles



707
Base w/ Paper Drawers
Double Wheel Swivel Casters

Unit 707
Shall be 30" Deep w/
Top Drawer in 3 Sections
36" in Height = 6 Drawers
33" or 30" = 5 Drawers
27" or 24" = 4 Drawers



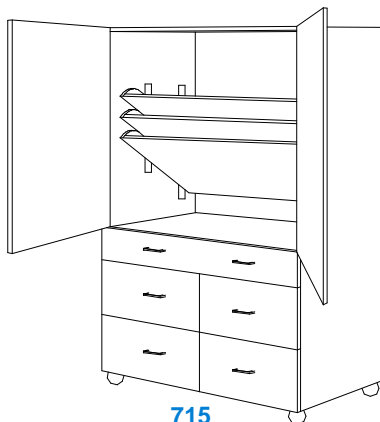
710
Open Storage



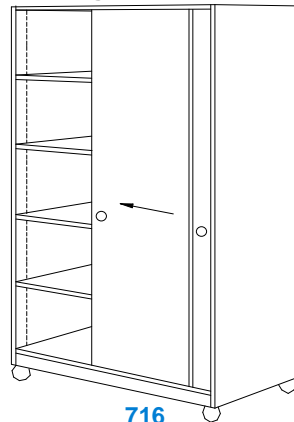
712
Storage w/ Doors
Diaphragm bottom required



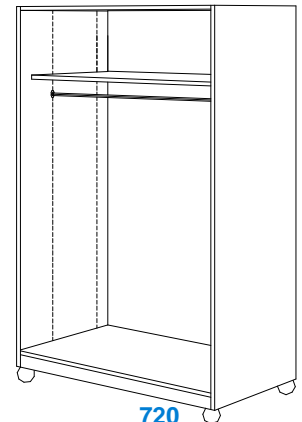
714
Storage & Drawers



715
Storage & Drawers
Tilting Shelf details on page 298



716
Storage w/ 3/4" Sliding Doors
Diaphragm bottom required



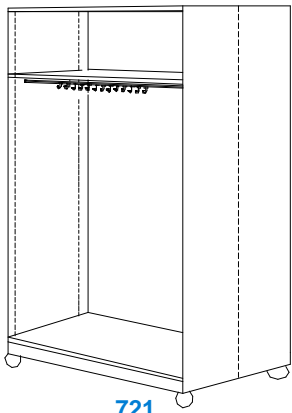
720
Open Wardrobe

NOTE: These drawings are available as **Autodesk® Revit®** Families and **AutoCAD® .DWG** and **.DXF** files at <http://www.woodworkinstitute.com/manual.asp> or with our CD Rom version of the **MANUAL**.

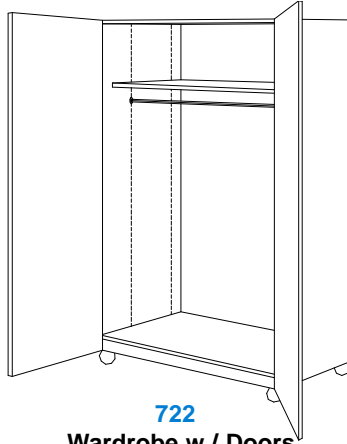
700 SERIES, MOVEABLE CABINETS

(Continued)

NOTE: All moveable units to be equipped with adequate approved casters for the intended load capacity.



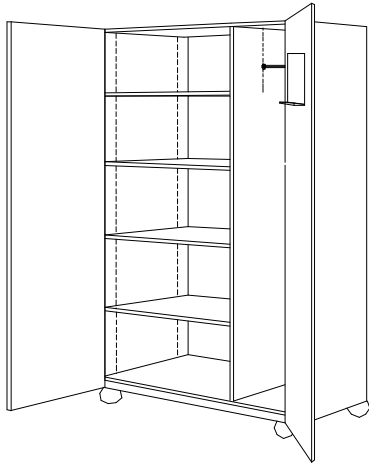
721
Open Wardrobe
Two Sides



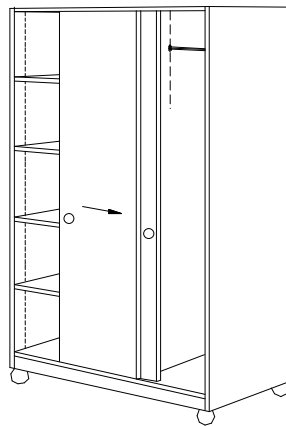
722
Wardrobe w / Doors
Diaphragm bottom required



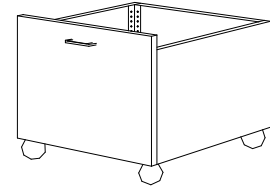
724
Teachers Cabinet
w / File Drawers & Lock



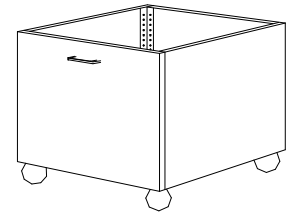
725
Teachers Cabinet
w/ Lock



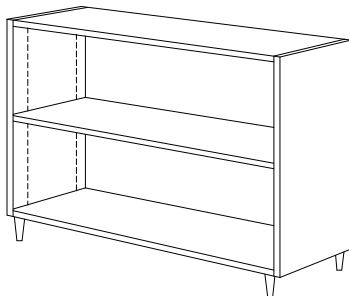
726
Teachers Cabinet
3/4" Sliding Doors & Lock



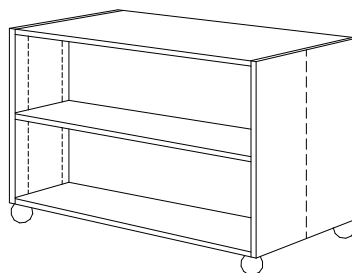
728
Toy Cart
Metal angle reinforced corners required



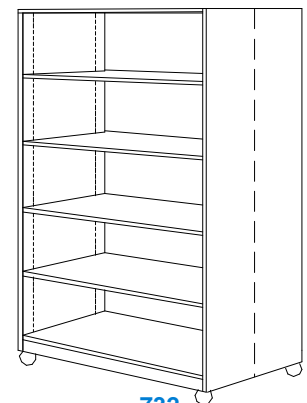
729
Toy Cart
Metal angle reinforced corners required



730
Bookcase, Single Sided
Fixed Tapered Legs



731
Bookcase, 2 Sided



732
Bookcase, 2 Sided

NOTE: These drawings are available as **Autodesk® Revit®** Families and **AutoCAD® .DWG** and **.DXF** files at <http://www.woodworkinstitute.com/manual.asp> or with our CD Rom version of the **MANUAL**.

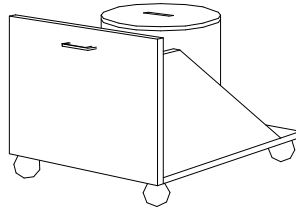
700 SERIES, MOVEABLE CABINETS

(Continued)

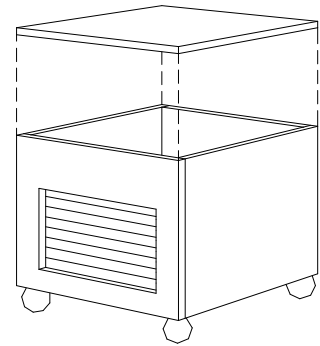
NOTE: All moveable units to be equipped with adequate approved casters for the intended load capacity.



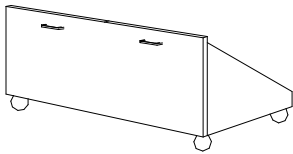
734
Bookcase, 2 Sided



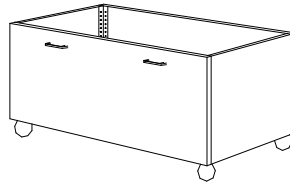
735
Clay Cart
Trash Can NIC
Metal angle reinforced corners required



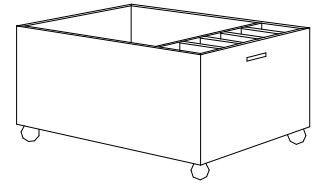
736
Clay Cart w/ Custom 22 ga.
Galvanized Liner, 3/4" LP Top
8 ea. 1/4" Hardboard Panels
Metal angle reinforced
corners required



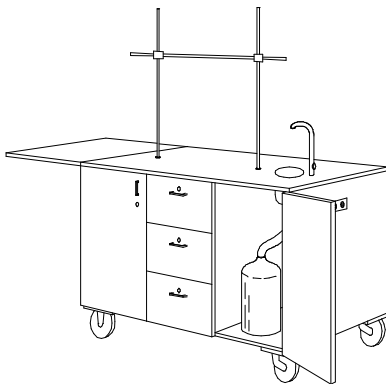
737
Block Cart
Metal angle reinforced
corners required



738
Block Cart
Metal angle reinforced
corners required



739
Ball & Bat Cart w/ 5 Equal
Compartments at One End
Metal angle reinforced
corners required



742 (See notes)
Demonstration Cart
48" x 33" x 24"
Laboratory Top

NOTES FOR CABINET 742:

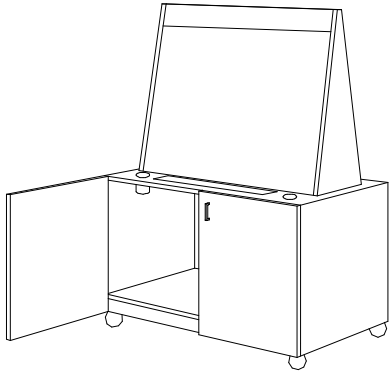
To be furnished with 6" round chemical sink, Burrett Rods, cross bar and flush sockets, galley pump with polyethylene tubing and 1 gallon bottles for both fresh water and waste, 3 prong duplex outlet with 15' supply cord, locks on all doors and drawers, 6 pegs on back of storage compartment door and 1/4" pegboard liner on back of sink door.

NOTE: These drawings are available as **Autodesk® Revit®** Families and **AutoCAD® .DWG** and **.DXF** files at <http://www.woodworkinstitute.com/manual.asp> or with our CD Rom version of the **MANUAL**.

700 SERIES, MOVEABLE CABINETS

(Continued)

NOTE: All moveable units to be equipped with adequate approved casters for the intended load capacity.

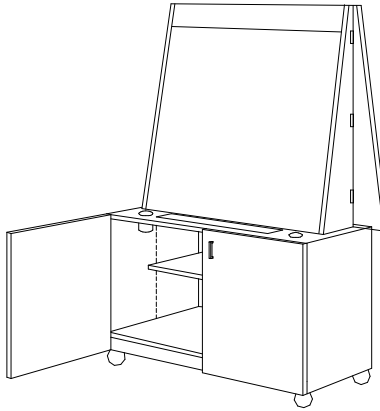


743

2 Sided Easel Cart

48" x 54" x 24"

Tack Board Top, LP Face & Top
Diaphragm bottom required

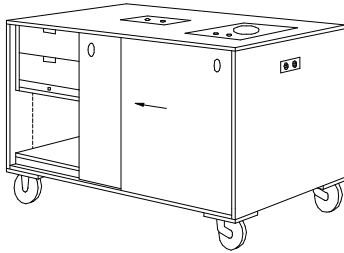


744

Single Sided Easel Cart

48" x 66" x 24" w/ Side Door

Tack Board Top, LP Face
Diaphragm bottom required



746 (See notes)

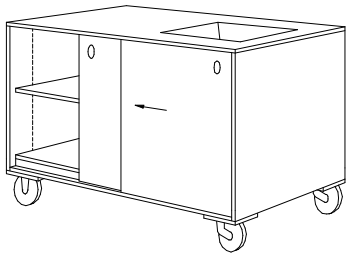
Cooking Demonstration Cart

48" x 33" x 24"

3/4" Sliding Doors & LP Top
Diaphragm bottom required

NOTES FOR CABINET 746:

To be furnished with electric cooking and mixing units,
built in 3 prong electric service w/ 15' supply cord.

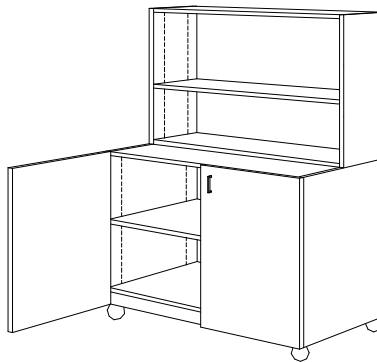


747

Nature Demonstration Cart

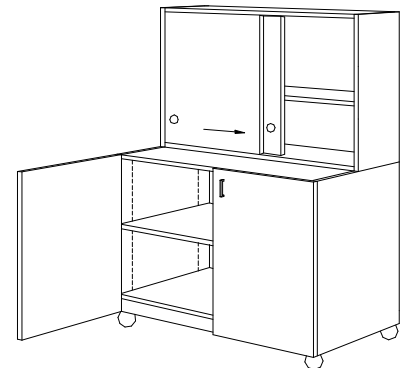
48" x 33" x 24"

3/4" Sliding Doors & LP Top
Removable 22ga. Galvanized Pan
Diaphragm bottom required



750

Open Hutch Cabinet
Diaphragm bottom required



751

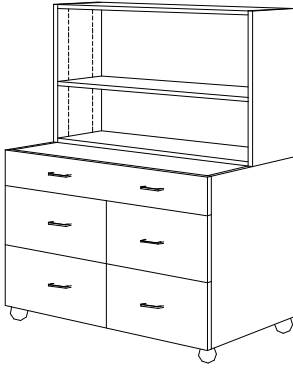
Hutch Cabinet
W/ 3/4" Sliding Doors
Diaphragm bottom required

NOTE: These drawings are available as **Autodesk® Revit®** Families and **AutoCAD® .DWG** and **.DXF** files at <http://www.woodworkinstitute.com/manual.asp> or with our CD Rom version of the **MANUAL**.

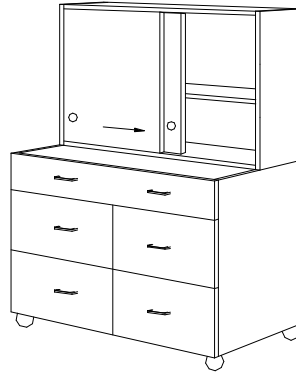
700 SERIES, MOVEABLE CABINETS

(Continued)

NOTE: All moveable units to be equipped with adequate approved casters for the intended load capacity.



752
Open Hutch Cabinet



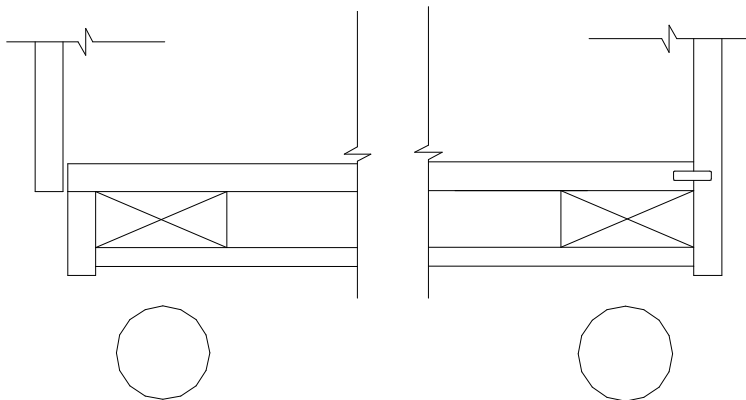
753
Hutch Cabinet
W/ 3/4" Sliding Doors



754
Open Hutch Cabinet



755
Hutch Cabinet
W/ 3/4" Sliding Doors



TYPICAL DIAPHRAGM BOTTOM DETAIL

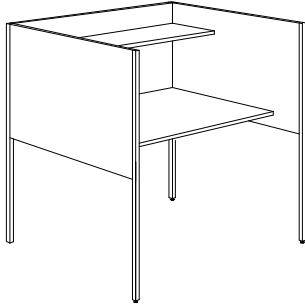
NOTE: These drawings are available as **Autodesk® Revit®** Families and **AutoCAD®** “.DWG” and “.DXF” files at <http://www.woodworkinstitute.com/manual.asp> or with our CD Rom version of the **MANUAL**.

700 SERIES, MOVEABLE CABINETS

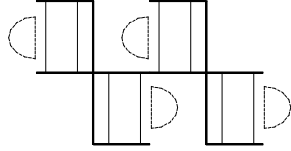
(Continued)

NOTE: All moveable units to be equipped with adequate approved casters for the intended load capacity.

STUDY CARRELS, LAYOUT & CONSTRUCTION



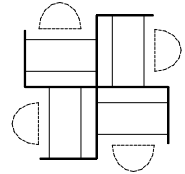
760
Study Carrel
38" x 54" x 30"



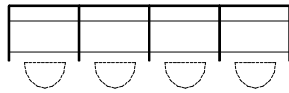
761



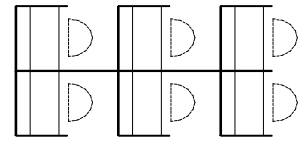
763



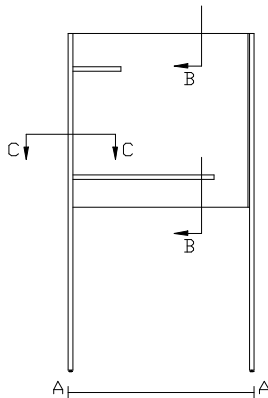
764



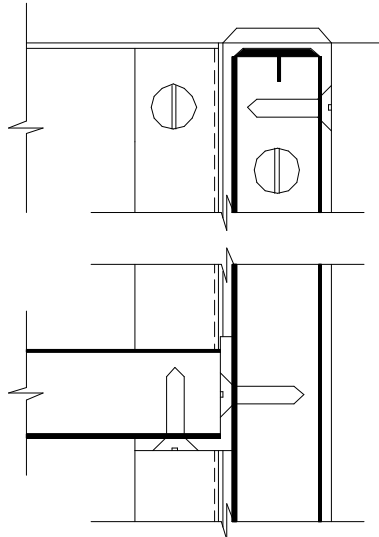
762



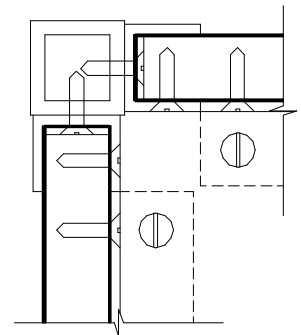
765



KEY



DETAIL "B"



DETAIL "C"

NOTE: These drawings are available as **Autodesk Revit** Families and **AutoCAD ".DWG"** and **".DXF"** files at <http://www.woodworkinstitute.com/manual.asp> or with our CD Rom version of the **MANUAL**.

NOTES